

NC Perinatal Health Strategic Plan

*Belinda Pettiford, Women's Health Branch Head
Women's and Children's Health Section
Division of Public Health
NC Department of Health and Human Services*

June 8, 2020



North Carolina Perinatal Health Strategic Plan

Focus Areas:

- Infant Mortality
- Maternal Health
- Maternal Morbidity
- Health of Women & Men
of Childbearing Age

North Carolina's Perinatal Health Strategic Plan 2016-2020



NC DEPARTMENT OF
HEALTH AND
HUMAN SERVICES
www.ncdhhs.gov



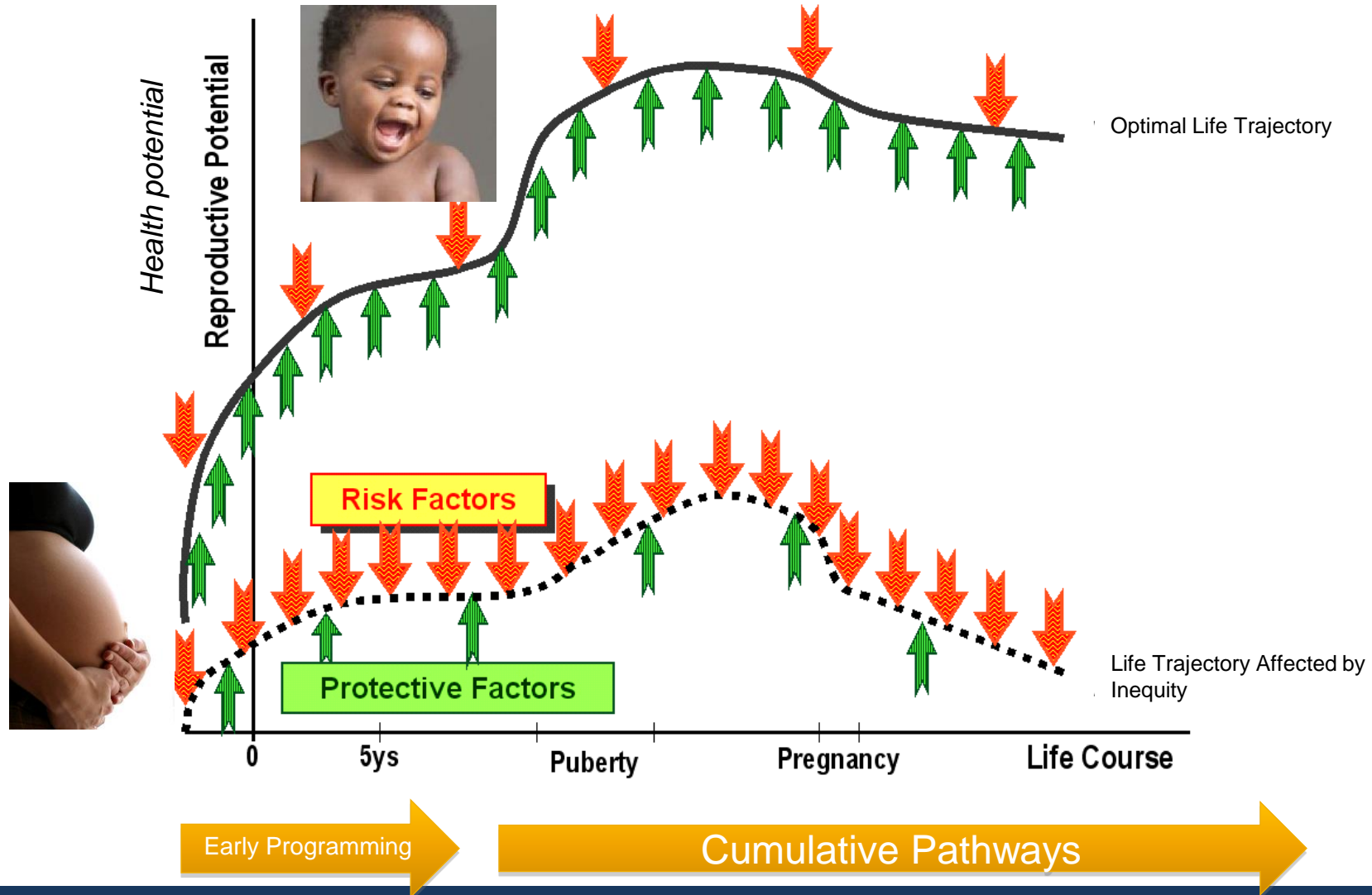
North Carolina
Public Health

Social Determinants of Health (SDOH)



Image Source: Healthy People 2020 website - <https://www.healthypeople.gov/2020/topics-objectives/topic/social-determinants-of-health>

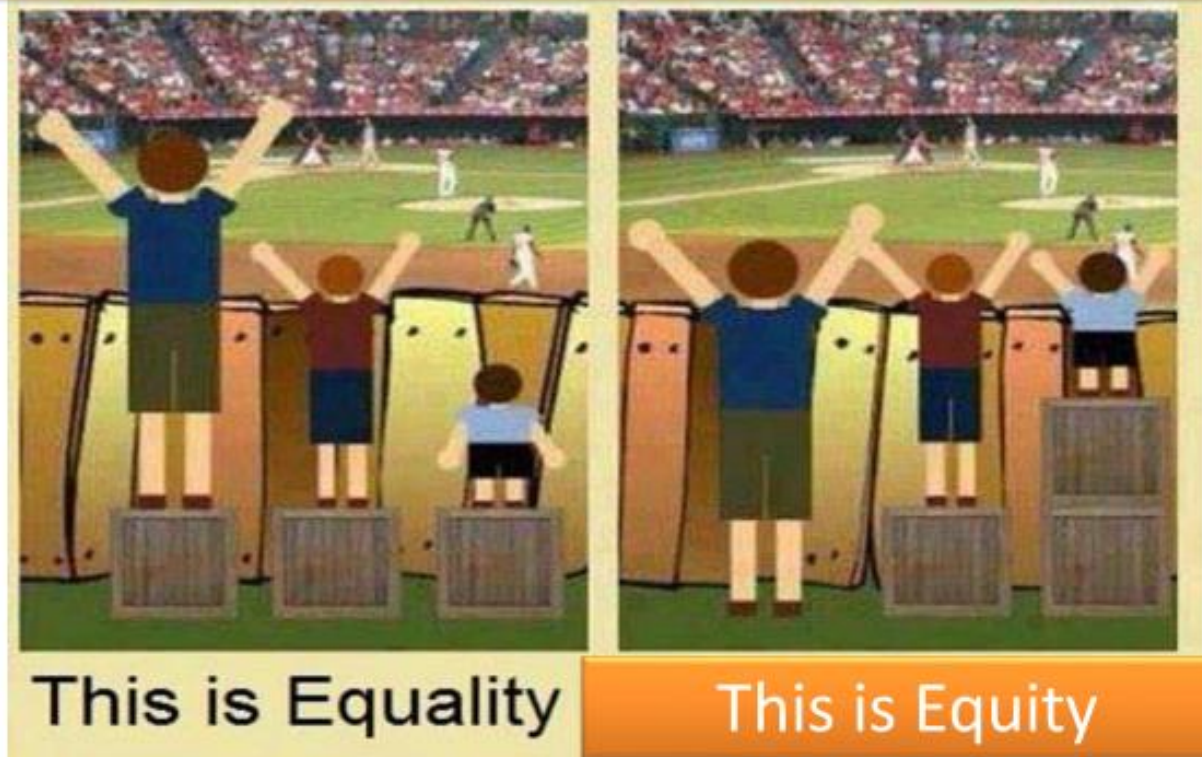
Life Course Approach



Health equity is more than the absence of health disparities

CREATING HEALTH EQUITY

Inputs may need to be different to achieve equal outcomes



MDCH, Health Equity Learning Labs 2013, provided by Hogan, V., Rowley, D., Berthiaume, R. and Thompson, Y, University of North Carolina at Chapel Hill. Adapted from <http://indianfunnypicture.com/search/equality+doesn%27t+mean+justice>

Health equity is every individual having access to the resources and opportunities that promote good health.

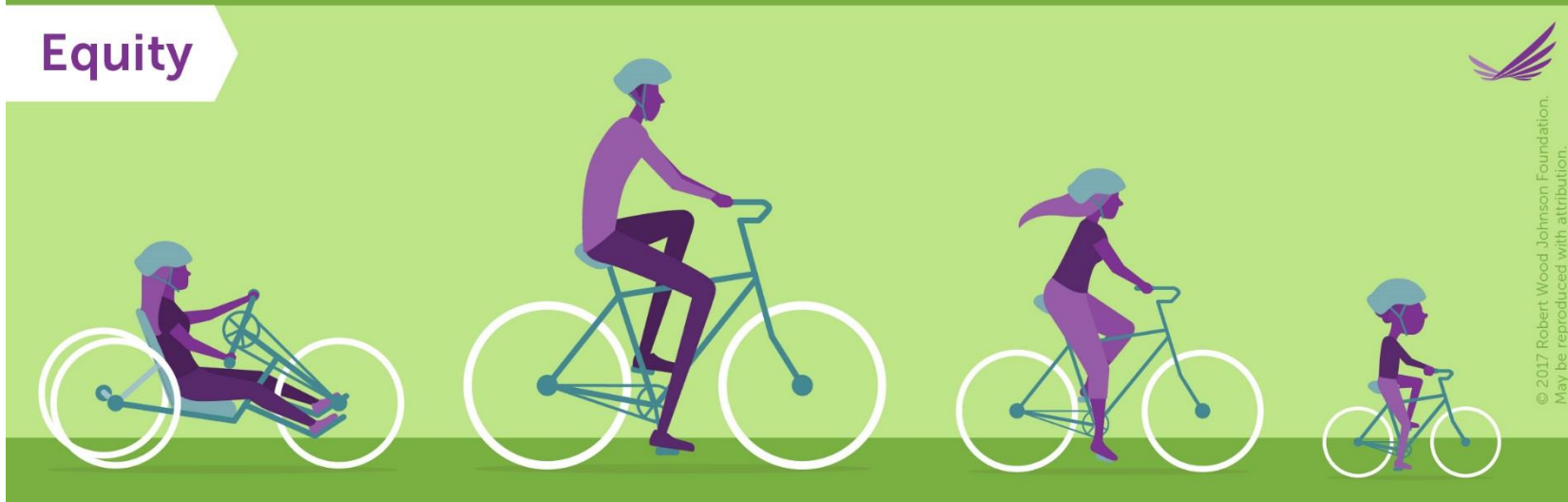
Health Equity

The opportunity for everyone to have good health.

Equality



Equity



© 2017 Robert Wood Johnson Foundation.
May be reproduced with attribution.

The Perinatal Health Strategic Plan

Goals:

- **Improving Health Care for Women and Men**
- **Strengthening Families & Communities**
- **Addressing Social & Economic Inequities**

Goal 1 – Improve Health Care for Women and Men

Point 1. Provide interconception care to women with prior adverse pregnancy outcomes

Point 2. Increase access to preconception care

Point 3. Improve the quality of prenatal care

Point 4. Expand healthcare access over the life course

Goal 2 – Strengthen families and communities

Point 5. Strengthen father involvement in families

Point 6. Enhance coordination and integration of family support services

Point 7. Support coordination and cooperation to promote reproductive health within communities

Point 8. Invest in community building and urban renewal

Goal 3 – Addressing social and economic inequities

Point 9. Close the education gap

Point 10. Reduce poverty among families

Point 11. Support working mothers and families

Point 12. Undo racism

The Perinatal Health Strategic Plan Team



SCHOOL OF MEDICINE

Center for
Maternal and
Infant Health

MomsRising.org | MamásConPoder.org

NC Child
The Voice for North Carolina's Children



CAROLINA
GLOBAL
BREASTFEEDING
INSTITUTE



North Carolina
Public Health Association



Work Groups:

Policy Workgroup

Data and Evaluations Work Group



The Data and Evaluation Work Group identifies data sources, develops monitoring and evaluation strategies, and supports research activities to support and inform the goals of the PHSP.

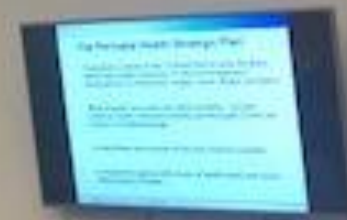
Communications Work Group

The Communications Work Group promotes and shares the intent and goals of the Perinatal Health Strategic Plan to audiences and stakeholders across North Carolina by forging opportunities and identifying champions who are interested in promoting the plan locally. We do this by developing educational materials and promotional items using social media platforms (including our website) to promote the plan.



Community and Consumer Engagement Work Group

The Community and Consumer Engagement Work Group is made up of a diverse group of community members to be a part of a joint effort by providing feedback regarding the North Carolina Perinatal Health Strategic Plan (PHSP) strategies, publications and services. The Work Group designs and implements capacity building training for community and Village 2 Village participants (consumers) by engaging in interactive, empowering activities. We seek to strengthen relationships and share background knowledge on the Plan.



- ✓ **Prepare to co-present with the Coordinator at upcoming conferences**
- ✓ **Prepare to participate on existing coalitions and boards in respective communities**
- ✓ **Create a policy for recruitment and retention**



Next Steps

- **Plan is being updated for next 5 years**
 - **Alignment with Maternal Health Strategic Plan**
 - **Hire Program Coordinator**
-

Please join us....

<https://whb.ncpublichealth.com/phsp/>

