

Cumberland County



Community Strategies:

Adverse Childhood Experiences

Adverse Community Environments

Prevention

Trauma Informed Care

Anti-poverty Initiatives

Workforce Pipeline – Economic Development



#BeTheDrivingForce





Be the
Driving
Force...

Community Child Abuse Prevention Plan



#BeTheDrivingForce



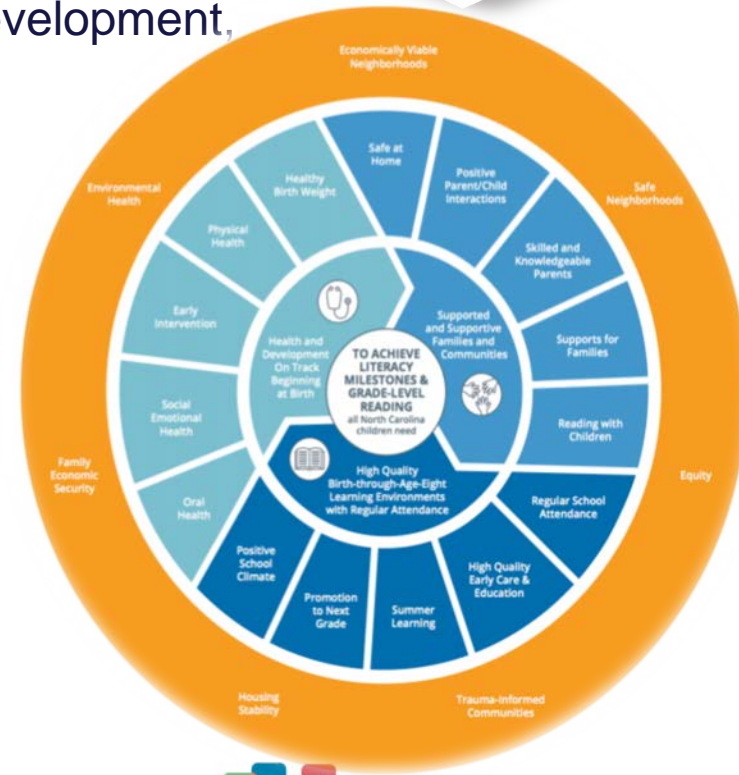
Pathways to Grade Level Reading



Be the Driving Force...

Literacy is rooted in birth-to-age-eight child development, and includes:

- ❖ Health & Development on Track Beginning at Birth
- ❖ Supported & Supported Families & Communities
- ❖ High Quality Birth-to-Age-Eight Learning Environments & Regular Attendance



#BeTheDrivingForce





**Be the
Driving
Force...**

Pathways for Prosperity



**PRE-K
EDUCATION**



**AFFORDABLE
HOUSING**



**LIFE SKILLS &
MENTORSHIP**



WORKFORCE



**K-12
EDUCATION**



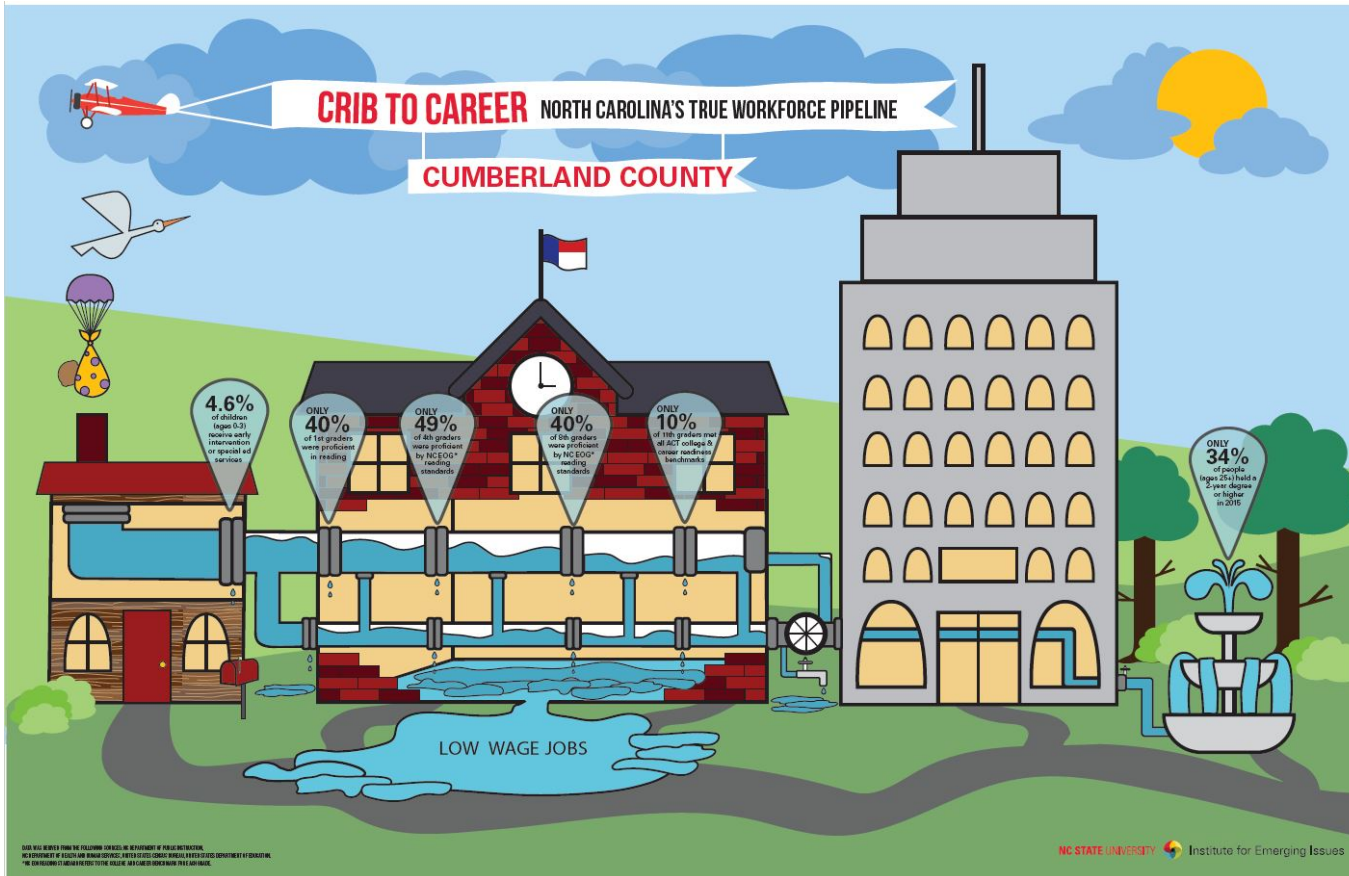
#BeTheDrivingForce



NC State – Institute for Emerging Issues



Be the Driving Force...



#BeTheDrivingForce





**Be the
Driving
Force...**

Greater Fayetteville United

Social Capital Community Survey – Conducted May & June 2017

- ❖ Perceptions of trust among citizens
- ❖ Trust of various organizations
- ❖ Participation in various activities
- ❖ Connection to religious community
- ❖ Volunteerism, engagement
- ❖ Obstacles/Barriers
- ❖ Internet Access
- ❖ Job & Income outlook



#BeTheDrivingForce





**Be the
Driving
Force...**

Supporting Children in Growing Up Well - It is all connected...



#BeTheDrivingForce

