

**ESSENTIALS FOR CHILDHOOD
 STEERING COMMITTEE MEETING**

**FEBRUARY 24, 2017
 10 AM TO 1 PM**

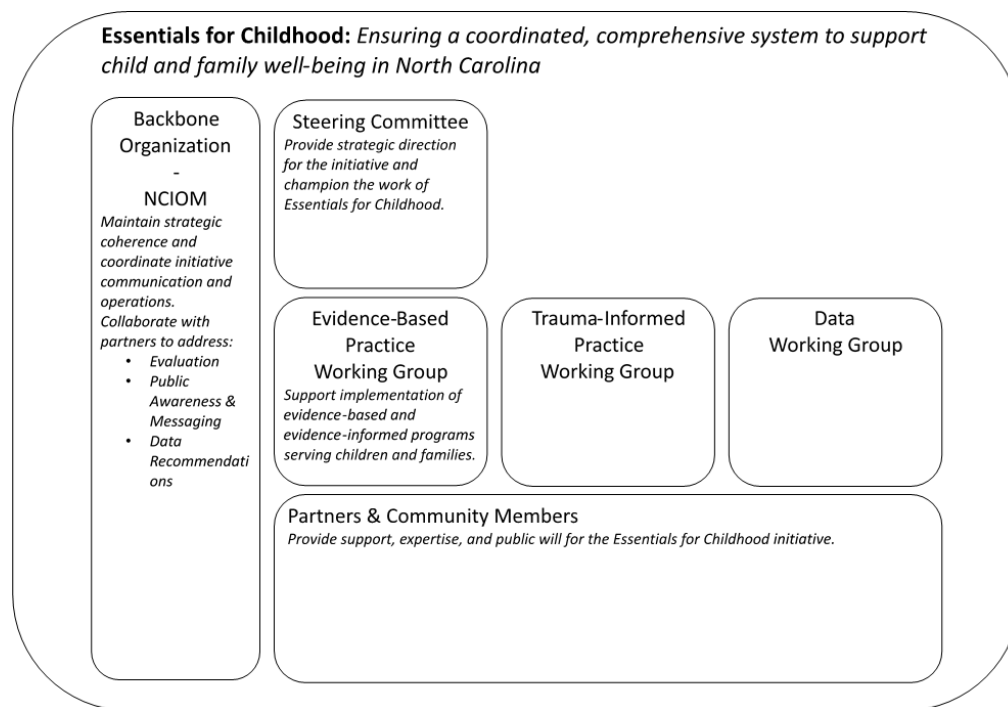
MEETING NOTES

In attendance: Michelle Ries, Catherine Joyner, Meghan Shanahan, Phil Redmond, Sharon Hirsch, Susan Robinson, Kristin O'Connor, Donna White, Berkeley Yorkery, Adam Zolotor

Introductions

Michelle Ries and Catherine Joyner

Vision and Strategy Review



Questions for discussion included:

Is this the right vision statement?

Do we need to do more work on vision statement?

How have we been using this?

What else do we need this statement to do?

How can we adjust for different audiences?

Discussion points:

- Include “ensuring SSNRs and Es”
- Every child feels loved and safe
- **Promoting child and family well-being in North Carolina, through the following strategies - MR to develop draft, AF to revise strategic model

What do agencies need to improve communication around Essentials?

- Reworking materials to include our messages
- Communication people from agencies need to be at our table? What is our connection with them?
- There is a challenge in communication on implementation science - people are resistant to using a new language. Do we NEED a new language?

What about a PSA on ACEs? “What’s predictable is preventable?” - but what are the action steps? How to build resilience

** Follow up with NCMJ editorial board - what if we did an issue on trauma, ACEs?

Working Group Updates and Planning

Evidence-Based Practices

Michelle started the discussion by explaining that the strategies outlined below were identified from past meeting notes and discussions around what were the best focused strategies for this group. Our goal for the meeting was explained as identifying a primary goal for this group and 1-3 strategies to toward the goal that will be achievable in 2017. The group discussed each potential strategy in order to focus the work.

Consensus on key strategy:

Increase support for aligning evaluation and RFP processes across agencies and organizations

Additional action steps to inform key strategy:

- Create a map of which DHHS divisions are connected to EBPs and division capacity for additional implementation
- Identify (develop?) and advocate for a framework for determining community readiness and capacity for EBP implementation

Next Meeting on 3/20.

SC discussion:

** Ask Kim at Smart Start - to pull research across program evaluation and data collection, Parent/Child Education - for EBP alignment research

** Can we do a pilot of an aligned process? What would that look like? How can we coordinate Home Visiting programs (Family Connects, NFP, DSS) - private funders could help fund pre-work planning. We can bring together funders at Home Visiting Summit in September. Sharon to follow up on opportunity to bring funders together, with Marshall - as of 2/24, Sharon had connected Michelle with Greer Cook and Tony Troop to discuss funders' conversation at Summit, with goal of discussing a pilot of an aligned process.

This will feed into Essentials' goal of supported improvement in agency coordination and across-state alignment.

*** We also need a home visiting subset of funding info that is being pulled together by Kristin, Catherine. What is the source of funding, where is it going? How are we maximizing resources in home visiting?

Other alignment? Early Childhood Systems Leaders Collaborative - made up of DHHS leadership re: how to *govern* birth to 8. F/U with Donna

Public Awareness Working Group

Following Steering Committee discussion, NCIOM contacted Tracy Zimmerman and the PA work group, and outlined restructuring of this group. Steering Committee had consensus that this was the correct approach.

Update on Trauma-Informed Practices and Communities Work Group

Held call with Tripp Ake and Jeanne Preisler on 2/20, to discuss potential areas of focus for TIP work group. Tripp and Jeanne also requested a write up of the "ask" for co-chairs and a suggested timeline for this work.

We identified the following potential areas of focus for the trauma-informed practices work group, listed here in suggested priority order:

1. Trauma-informed schools
2. Judicial staff/judges – education and raising awareness of trauma, impact
3. Integrated care/PCP education on trauma informed care

Suggested timeline through 2017 (bimonthly meetings)

- March/April 2017: Define WG vision and area of focus/goal (i.e. trauma informed schools):
 - o Goal:
 - o Description:
 - o Rationale:
 - o Co-Chairs:
- March/April 2017: Draft list of working group members (cross-sectional representation of relevant agencies, organizations)
- April 2017: Invite WG members to first meeting (set dates using Co-chair and backbone staff availability)
- May 2017: First meeting

- Introduce members to Essentials for Childhood initiative, current work, progress
- Discuss draft goals of working group – do we have consensus?
- Identify a set of strategies and actions that will collectively contribute to progress toward the initiative goal (short- and long-term, assessed against a set of common criteria to ensure that the strategies are selected and sequenced in such a way so as to help meet the initiative goals)
- June/July 2017: Second meeting
 - Define measurement plan and specific outcomes to achieve by end of 2017
 - Progress and reworking of strategies and actions as needed
 - Expert and research content as needed
- August/September 2017: Third meeting
 - TBD
- October/November 2017: Final WG meeting
 - Discussion of preliminary outcomes
 - Strategies for next steps and sustainability of working group progress

Questions for SC discussion:

- Are these the right priority areas? Is trauma-informed schools the top priority area?
- What goals around these areas would you suggest be included for discussion in the first meeting?
- Any initial suggestions for members (to be refined)?
- How to increase involvement of co-chairs and group members at Steering Committee level?
- What information would you like to see from this group?
- What are the desired outcomes?

***Next Steps: NCIOM to follow up with Tripp and Jeanne re: co-chair and review of timeline

Discussion of TIP group and potential strategies:

- YES to focus on trauma-informed schools, but with an additional focus on early childhood - education.
- Look at models in Buncombe and Wake on integrated mental health
- Pull together research on trauma-informed school models

Potential members:

- Katie Rosenbaum, Child and Family Policy, Duke
- Susan Robinson, DMH
- Bill Hussey or Ellen Essek, DPI, Whole School initiative
- Nation Hahn - talk to him
- Cindy Wheeler, Tasha, Nichole Owens, DCDEE
- Cynthia ?, board of ed
- Karen McLeod, Benchmarks
- Family/parent reps (Susan to think about)
- Funders: Duke, Z Smith, KBR, Blue Cross, John Rex, Community Foundation of Greensboro

Focus on intersection of community involvement and trauma/ACEs work
How to bring early childhood in - Early Foundations curricula and staff training
What else? Janet Zingerman, CCRI; Public School Forum; Smart Start
DCDEE is now requiring the PCANC training in recognizing abuse

Data Working Group

In development. At last SC call, agreed to put together a small meeting to develop a white paper around the data recommendations not addressed through Pathways.

From SC discussion:

- ***Work on shared measures, validated tools for outcomes/measures - this group can also work with EBP group on alignment

New/Ongoing Work and Opportunities for Alignment

Michelle and Catherine updated on several new groups/conferences/etc. they have participated in or plan on participating in, with further discussion from the Steering Committee about similar activities. Including:

- Children's Cabinet – upcoming meeting on 3/6 with DPI and DPS – discussion and strategies re: format, structure, funding model, focus (i.e. 0-18, etc.) and strategies for additional executive and legislative buy-in and support.
- NCRHLA Priority Strategies
 - Apply rural lens to Pathways priorities
 - Increase the number of children in rural communities assigned to a medical home,
 - Examine the rural infrastructure/networks for early childhood,
 - Apply implementation science/readiness for evidence-based programs, and
 - Triage of child and family needs at birth given local capacity and need.
- NC Works Conference – Oct. 2017 - RFP for development
 - The conference is targeted toward anyone with an interest in workforce and economic development in North Carolina. Attendees include staff and management of local Workforce Development Boards, Career Centers, the Department of Commerce, Health and Human Services, Public Safety, the Community Colleges, local Social Services offices, and North Carolina's public schools and universities. Others attending the conference are members of local Workforce Development Boards, economic development professionals, and staff of community-based and faith-based organizations.
 - Suggestions include: early childhood education workforce development (this may be better from an economic development lens), development re: health care professionals on trauma/ACEs, etc., or family leave policy research, or a combination of several and the individual and cumulative impact on kids and families
- Collective Impact Learning Network, Jordan Institute of Social Work, UNC-CH
- Health Disparities Group –CJ update on webinar, etc.
- Kidonomics, Feb. 7

CDC Evaluation and TA:

Essentials for Childhood All-State Call (focus on economic issues)

Evaluation Review

Program Call (framing/messaging/outreach)

What else do we need? What information would we like to see from other states?

Suggestions for Reverse Site Visit

We did not have time to review these calls and discuss.

