



Centering[®]
Healthcare
Institute

Improving health by
transforming care
through
Centering[®] groups

centeringhealthcare.org

Imagine a better
patient experience







Imagine
better outcomes



Core Components of Centering



Centering[®] Essential Elements

HEALTH
ASSESSMENT
HAPPENS IN
THE GROUP
SPACE

PATIENTS ENGAGE
IN SELF-CARE
ACTIVITIES

GROUPS ARE
FACILITATED TO BE
INTERACTIVE

EACH SESSION
HAS A PLAN,
BUT EMPHASIS
MAY VARY

THERE IS TIME
FOR SOCIALIZING

GROUPS ARE
CONDUCTED IN
A CIRCLE

GROUP MEMBERS,
INCLUDING
FACILITATORS AND
SUPPORT PEOPLE,
ARE CONSISTENT

GROUP SIZE
IS OPTIMAL FOR
INTERACTION

THERE IS ONGOING
EVALUATION



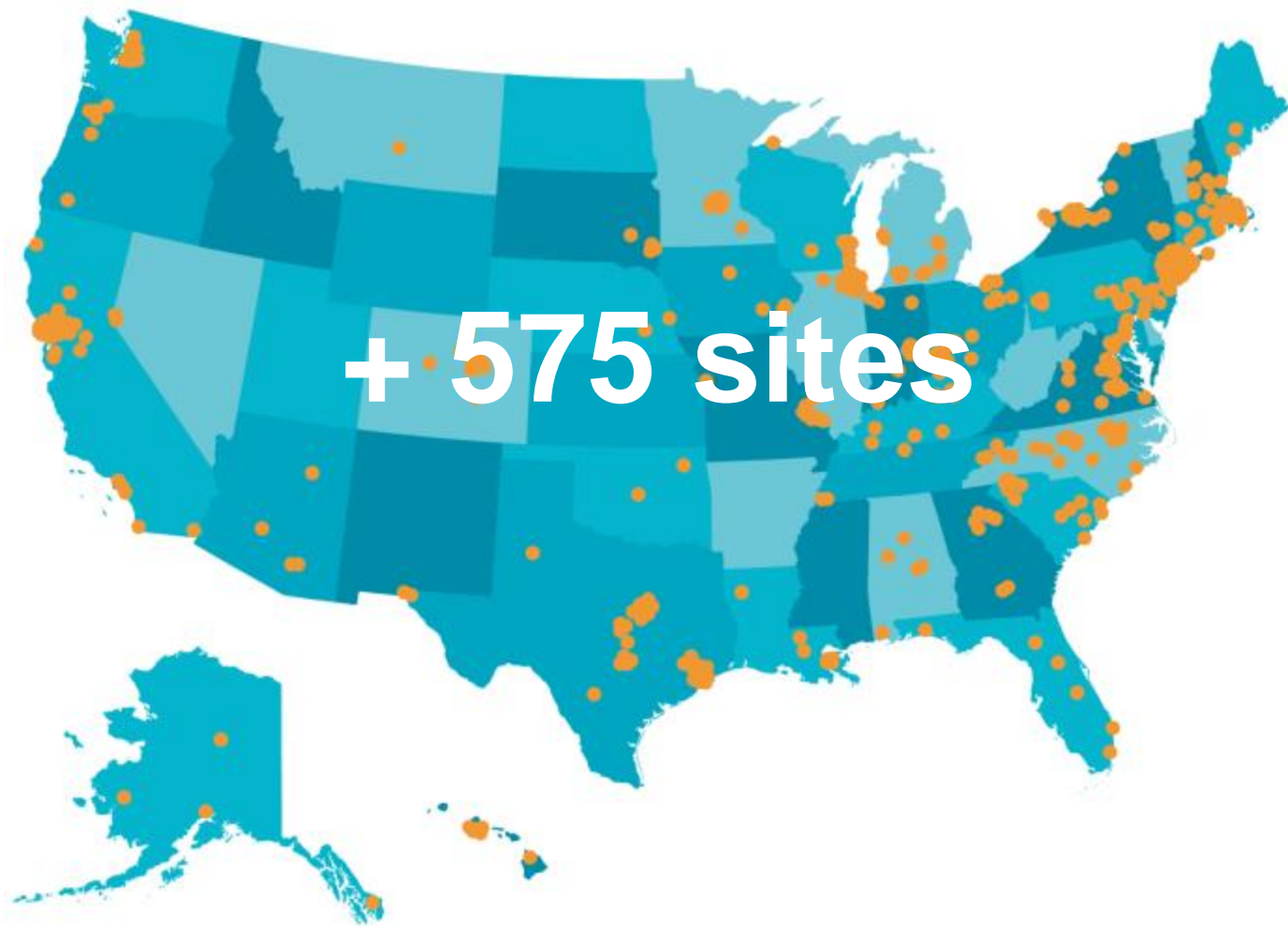












+ 575 sites

Who is Centering?

Centering[®]
Healthcare
Institute



Support Centering through research

Bibliography
Stay up to date with current Centering research.

[Download](#)

Interested in pursuing Centering research?

Contact us for more information on our research priorities and experience.

[Connect with us](#)

PTB risk reduction

- 33%

Prospective Randomized Clinical Trial

Ickovics, et al 2007

A multi-site randomized control study of 1,047 women found a 33% reduction in risk of preterm births in Centering patients compared to those receiving only individualized prenatal care. The reduction among African Americans was even higher at 41%.

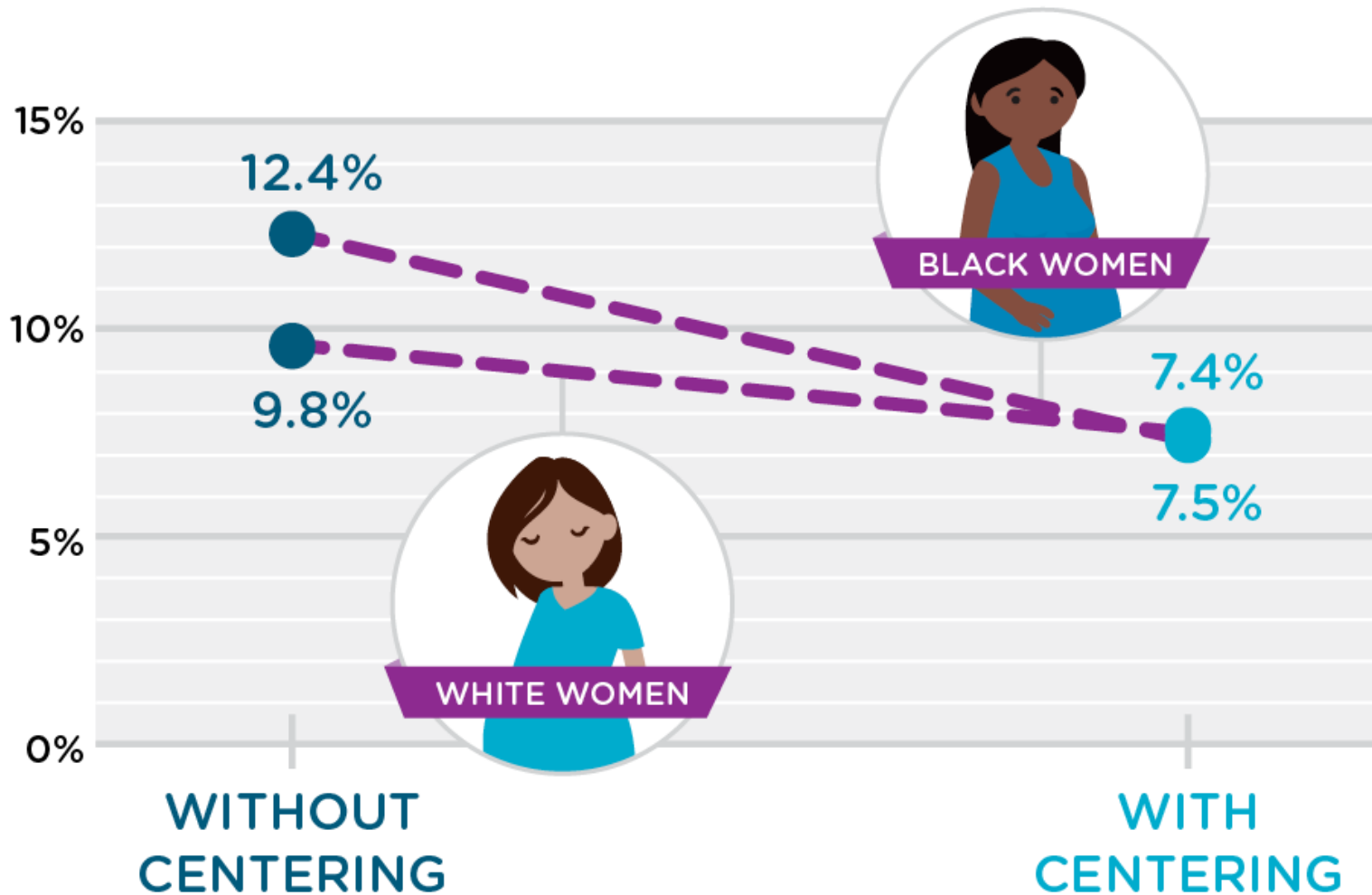
- 47%

Retrospective cohort study

Picklesimer, et al 2012

A 2012 retrospective cohort study compared 316 women in Centering to 3767 in traditional care and found a 47% reduction in risk of preterm birth in Centering patients compared to those receiving only individualized care.

Preterm Birth <37 Weeks By Race



Retrospective cohort study Picklesimer, et al 2012

Group Prenatal Care Results in Medicaid Savings with Better Outcomes: A Propensity Score Analysis of CenteringPregnancy Participation in South Carolina

Sarah Gareau, et al, 2016

CenteringPregnancy Reduces HC Costs

Centering[®]
Healthcare
Institute

Preterm Birth Rate

36% reduction (p 0.05)

Average direct medical cost savings = \$22,667

Low Birth Weight Rate

44% reduction (p 0.05)

Average direct medical cost savings = \$29,627

NICU Admission Rate

28% reduction (p 0.05)

Average direct medical cost savings = \$27,249

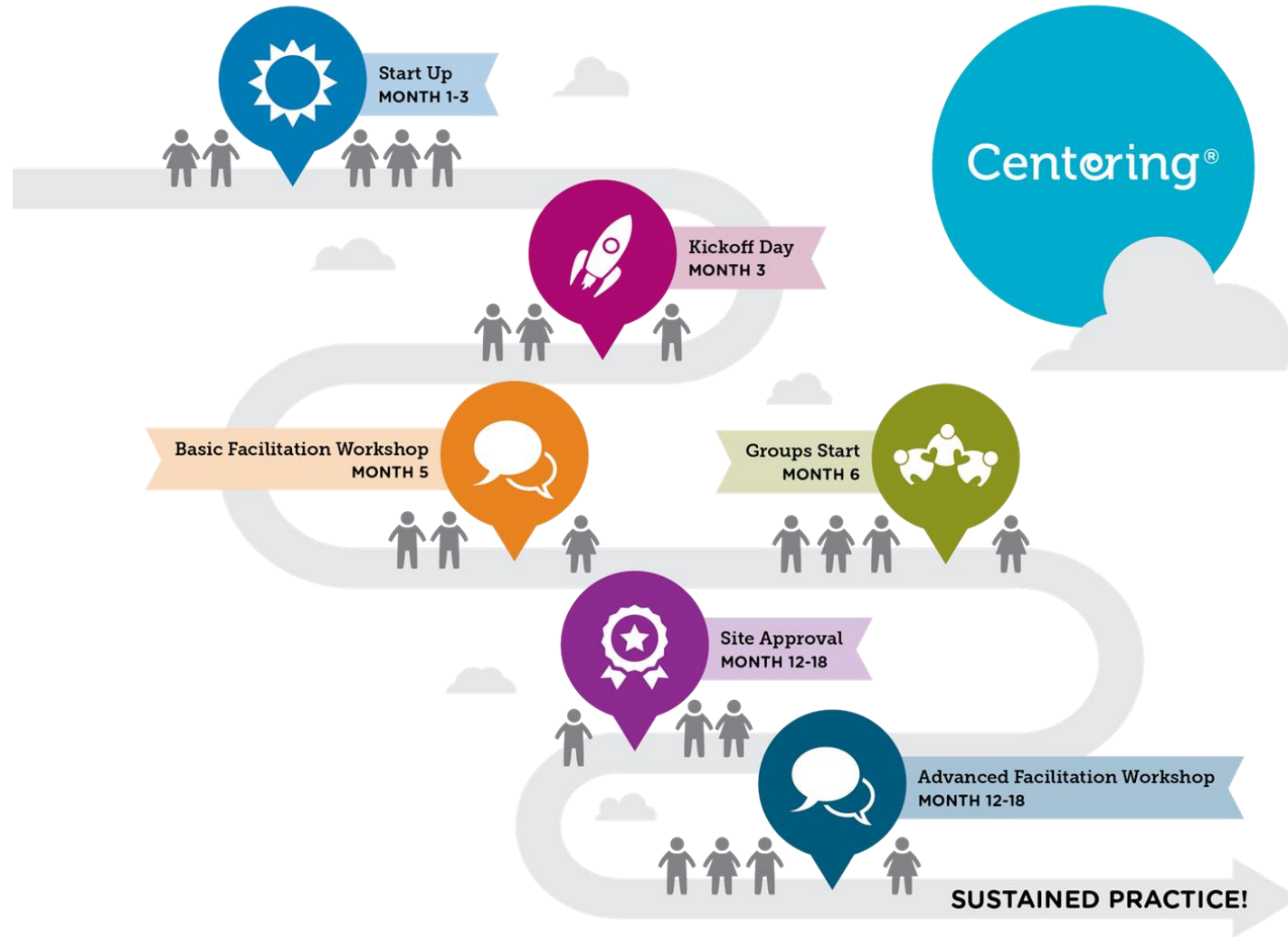
Overall savings = \$3,989,214

n = 1262, \$3,161 per patient in Centering



Centering[®]
Healthcare
Institute

Centering Implementation Pathway









Marena's Dashboard

Welcome!



Welcome to your new Centering portal!

We are delighted to provide you with access to a variety of new tools and resources, e-learning, CenteringConnects and the new CHI store - all from one easy-to use place. Whether you are here to register for a workshop, order products or see what's new in the Centering community, we appreciate that you are here with us.

Ready for a [guided tour](#)?

Resources

- Tutorials & Quick T
- Organizational Ma
- Centering Brand B
- Centering Logos
- Centering Brand G
- Centering Photogr
- Patient Recruitme

Orders

PENDING

COMPLETED (1)

My Downloads

DOWNLOADS

WEBINARS (2)

Account



CENTERING HEALTHCARE INSTITUTE DASHBOARD

Site Information

Site license #M1362

Site license expiration date *No Data*

Location address 89 South Street Suite 404, Boston, MA 02111 USA

Site approval status - No Data

Approval report due date *No Data*

CHI Practice Services Manager

Robin Hicks
(857) 284-7570 x107
rhicks@centeringhealthcare.org

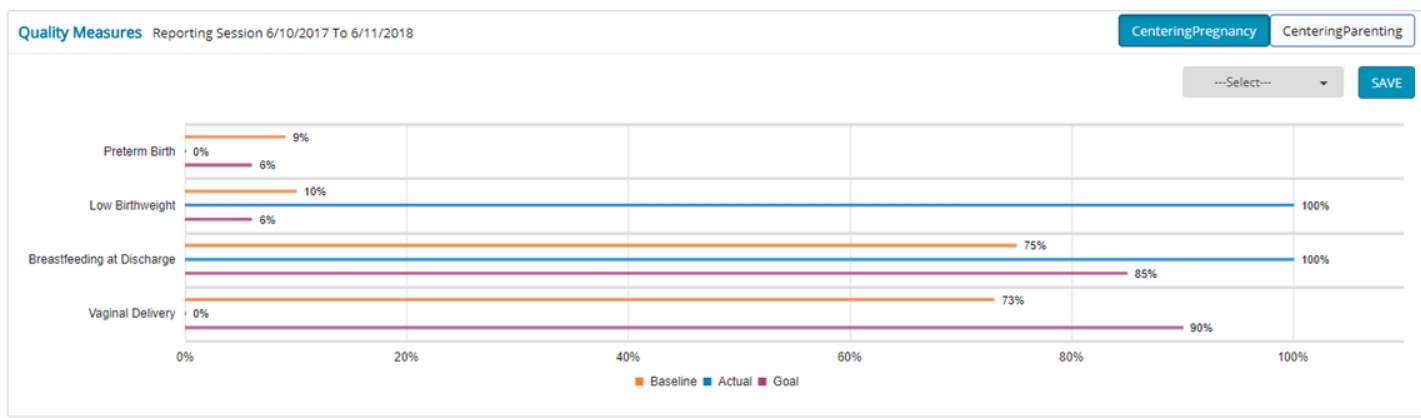
CHI Consultant

Featured News

Centering @CenteringHealth
Centering® Healthcare Institute Launches Groundbreaking Health Outcomes Reporting System: globenewswire.com/news-release/2...

Centering® Healthcare Institute Laun...
globenewswire.com

More ...



CenteringConnects

Article: Patient-to-patient "coaching"
Last reply by nlewis on Mon, 6/11/2018

Announcing Certification for Centering Facilitators!
Last reply by Marena Burnett on Wed, 6/06/2018

New Facilitation Materials
Last reply by Marena Burnett on Wed, 6/06/2018

Charting
Last reply by Margie on Wed, 6/06/2018

Other Visits & Health Outcome Survey

More ...



Connect with us!



CenteringPregnancy®

**97.8% patient
satisfaction**

Preterm Birth

NC RATE 10.5%
US 9.9%
Centering NC 7.8%
MOD GOAL 5.5%

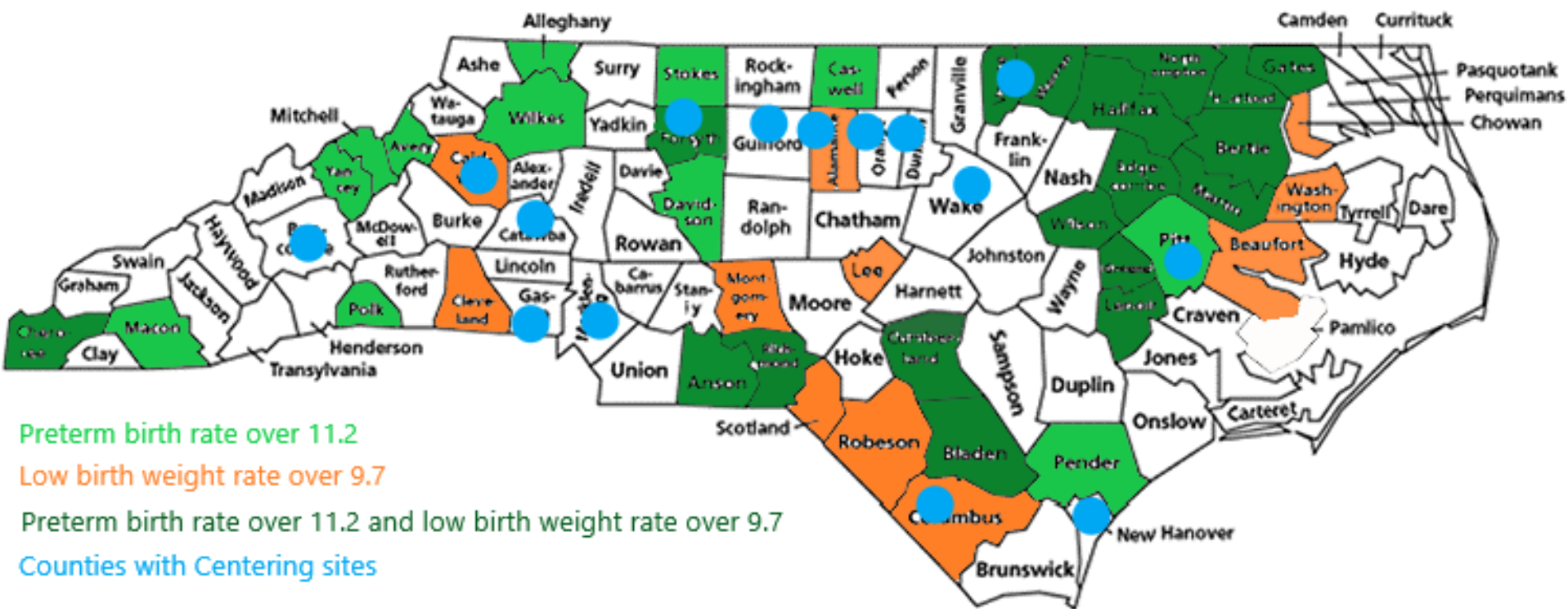
Low Birth Weight

NC RATE 9.1%
US 8.1%
Centering NC 7.3%
HP2020 GOAL 7.8%

Breastfeeding

US RATE 83.2%
NC 84.9%
Centering NC 92%
HP2020 GOAL 81.9%

CHI data based on NC practice sites reporting through CenteringCounts 2017-2018; n= 2017 and US data source: March of Dimes PeriStats 2019, CDC and HP2020



Preterm birth rate over 11.2

Low birth weight rate over 9.7

Preterm birth rate over 11.2 and low birth weight rate over 9.7

Counties with Centering sites

Source: NC DHHS Vital Statistics



