

North Carolina Essentials for Childhood April 2018

We are excited to share updates on partners' work, Essentials for Childhood activities and initiatives, and other work of interest to our state partners.

Visit our Website

April is Child Abuse Prevention Month

Prevent Child Abuse North Carolina

Pinwheels for Prevention: PCANC worked with partners to plant [pinwheel gardens throughout the Triangle](#) in locations including the Governor's Mansion, American Tobacco Campus, Nash Square, and all 38 public parks in Raleigh. Partners across the state—in Guilford, Randolph, Mecklenburg, and New Hanover Counties to name a few—have also planted pinwheel gardens to contribute to this statewide effort to raise awareness of the issue of child abuse and maltreatment and start conversations about ways to promote safe, stable, nurturing relationships and environments for our children



(photo via Twitter @PCANC)

Paddling Downstream to Promote Investment Upstream: On April 24th, two board members of PCANC, Zeke Bridges and Thomas Moore, embarked on a three-day, 70-mile journey paddling down the Neuse River from Seven Springs to New Bern in an effort to raise awareness of the need to invest upstream in evidence-based strategies to reduce child abuse and neglect. They are calling their journey "[Paddling for Prevention](#)" and their progress can be followed on PCANC's [Twitter](#).

5 Factors 5K: On April 14th, [PCANC held its inaugural 5K run/walk](#) with proceeds devoted to upstream investments in child abuse prevention. The 5K brought attention to the five protective factors that are connected to lower incidence of child abuse and neglect: parental resilience, social and emotional competence of children, parental knowledge of child development and parenting skills, concrete support for parents, and social connections. The event highlighted the connection between these five factors and the social and emotional benefits of physical activity.

North Carolina Department of Health and Human Services

[DHHS employees planted Pinwheels for Prevention](#) in support of Prevent Child Abuse Month. On April 13th, employees planted 2,000 pinwheels at the State Farmer's Market in Raleigh, which will remain at the Farmers' Market until April 27th. Employees also gathered at the Division of Public Health to plant 2,000 pinwheels in a garden located on DPH's campus.

The Duke Endowment

The Duke Endowment [reflected on their efforts to prevent child abuse and neglect](#) funding the development of a coordinated, community-wide approach to support families. The Durham Family Initiative, a 12-year collaboration between The Duke Endowment and the Duke Center for Child and Family Policy, sought to improve cooperation among direct service providers to create a system of care

for high-risk families, more effectively connecting them to services that support healthier parent-child relationships. This initiative reduced the community-wide rate of child maltreatment by 50% and led to the establishment of Durham Connects, a home visiting program that provides in-home health assessments and subsequent appropriate referrals for mothers and newborn babies. Randomized controlled trials have shown that Durham Connects improves parental-infant relationships, strengthens connections to community resources, and increases high-quality childcare placements. The model is being replicated in other counties in North Carolina and Iowa.

Join us on May 18 to discuss opportunities to prevent child maltreatment and promote young children's mental health

On Friday, May 18, the North Carolina Institute of Medicine will reconvene the [2015 Task Force on Essentials for Childhood](#) and the [2012 Task Force on the Mental Health, Social, and Emotional Needs of Young Children and Their Families](#) at a meeting to discuss progress on each Task Force's recommendations and explore new opportunities for policy change and evidence-based solutions. The NCIOM invites Task Force members and other partners to attend. The meeting agenda will include highlights of community-based approaches to child maltreatment prevention and mental health promotion, policy and advocacy updates, and small group discussion on community and state policy levers of change. [Register here](#) – space may be limited.

North Carolina Medical Journal: Addressing Adverse Childhood Experiences in North Carolina

The [latest issue of the North Carolina Medical Journal](#), published March 21 and co-sponsored by Essentials for Childhood, examines the effects of adverse childhood experiences (ACEs) on lifelong health. Public health providers, social workers, and researchers share data on the impact of ACEs, details about related issues such as poverty and domestic violence, and recommendations for promoting resiliency. In addition to laying out the problem of childhood trauma, this issue provides examples of success stories from around the state, as well as prescriptions for how communities can combat ACEs in the future.

We have highlighted several articles in this issue in press releases, listed below. Please help us distribute to your networks and colleagues! [Cumberland County Tackles Child Abuse with Innovative Prevention Plan](#)
[Watauga County Leads the Movement Toward Compassionate Schools in NC](#)



2018 Child Health Report Card

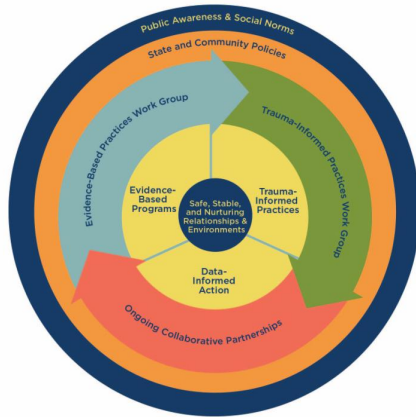
The [2018 Child Health Report Card](#), was published February 20. This annual publication raises awareness of the health of North Carolina's children by summarizing data on important child health indicators. The NCIOM, in collaboration with NC Child, produces the report card to assist health administrators, legislators, and child and family advocates in their efforts to improve the health and safety of children statewide. The 2018 Child Health Report Card highlights financial security, opportunity, and health, and addresses ways that North Carolina can work toward ensuring safe, stable, and



nurturing relationships and environments for children and families.

Essentials for Childhood - Working Groups

NC ESSENTIALS FOR CHILDHOOD
Conceptual Model



The Evidence Based Practices work group continues to meet and develop detailed recommendations for the alignment of funding cycles, RFP processes, and evaluation metrics.

Data Gaps Analysis: Pathways to Grade-Level Reading – On April 18, Essentials for Childhood facilitated a meeting of the Pathways to Grade-Level Reading Data Action Team, to explore the data available for the Pathways Measures of Success, identify additional available data, and begin to explore potential recommendations for data development and advocacy. [More from North Carolina Early Childhood Foundation on the Pathways initiative here.](#)

Additional Resources

We are pleased to share resources from the National Association of County and City Health Officials (NACCHO) with tips and strategies for messaging on child maltreatment prevention. NACCHO has worked with CDC partners, Lynn Davey, and a group of national partners over the past two years to create messages that can be used across organizations during Child Abuse Prevention Month and throughout the year.

[Changing the Conversation](#)
[Message Bank Introduction](#)
[Message Bank](#)

Name | Company | Phone | Fax | Email | Website

STAY CONNECTED

