

WNC **HEALTHY** IMPACT

Marian Arledge, MPH
Executive Director, WNC Health Network



WNCHEALTHYIMPACT

www.WNCHealthyImpact.com

HOME

ABOUT US

PARTNERS

RESOURCES

LOCAL STORIES

CONTACT

Partner Log-in

HCD Learning Collaborative
Log-In



WNC Healthy Impact is a partnership and coordinated process between hospitals, public health agencies, and key regional partners in western North Carolina, working towards a vision of improved community health. We are working together locally and regionally on a community health improvement process to assess health needs, develop collaborative plans, take coordinated action, and evaluate progress and impact.

This innovative regional effort is supported by financial and in-kind contributions from hospitals, public health agencies, and partners, and is housed and coordinated by WNC Health Network, Inc. Current efforts to infuse results-based accountability throughout this process are supported by a grant from The Duke Endowment.



ABOUT US

Hospitals and health departments are working together to improve community health. Learn more about our goals and regional priorities.



PARTNERS

WNC Healthy Impact is a partnership between hospitals and health departments in Western North Carolina. Find out about our partners.



RESOURCES

We are creating a regional process to enhance and support local community health improvement. Click here for info and resources.

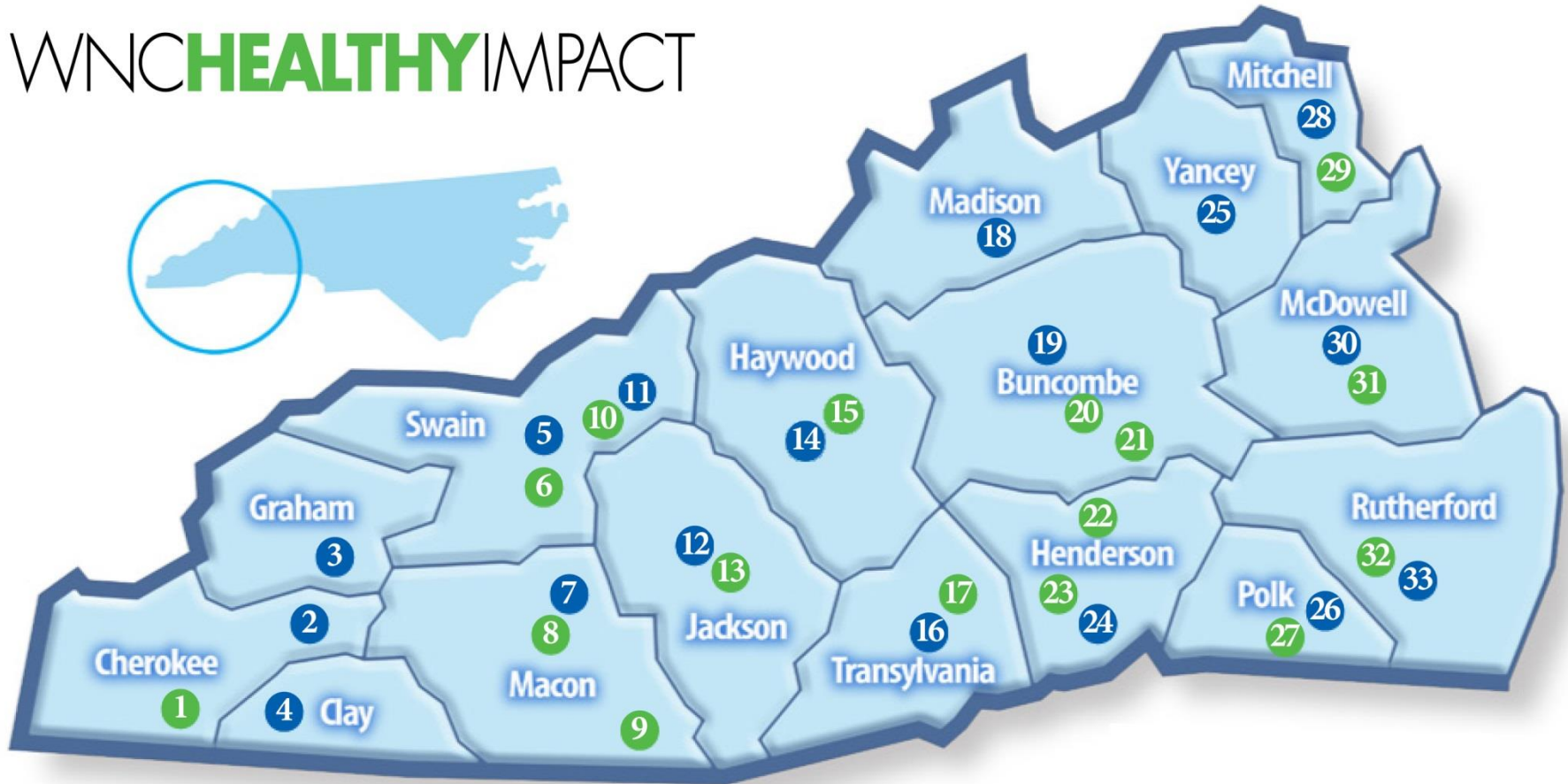
Learn about what is happening in your community; check out the local story! ▶



WNC Health Network

Providers Working Together

WNC **HEALTHY** IMPACT



- | | | | |
|--|--|---|--|
| 1 Murphy Medical Center | 10 Cherokee Indian Hospital | 17 Transylvania Regional Hospital | 25 Toe River Health District– Yancey |
| 2 Cherokee County Health Dept. | 11 EBCI Public Health and Human Services | 18 Madison County Health Dept. | 26 RPM Health District– Polk |
| 3 Graham County Dept. of Public Health | 12 Jackson County Dept. of Public Health | 19 Buncombe County Health and Human Services | 27 Saint Luke’s Hospital |
| 4 Clay County Health Dept. | 13 Harris Regional Hospital | 20 Mission Hospital | 28 Toe River Health District– Mitchell |
| 5 Swain County Health Dept. | 14 Haywood County Health & Human Services Agency | 21 CarePartners Health Services | 29 Blue Ridge Regional Hospital |
| 6 Swain Community Hospital | 15 Haywood Regional Medical Center | 22 Park Ridge Health | 30 RPM Health District– McDowell |
| 7 Macon County Public Health Center | 16 Transylvania County Department of Public Health | 23 Margaret R. Pardee Memorial Hospital | 31 McDowell Hospital |
| 8 Angel Medical Center | | 24 Henderson County Department of Public Health | 32 Rutherford Regional Health System |
| 9 Highlands-Cashiers Hospital | | | 33 RPM Health District– Rutherford |

WNC **HEALTHY** IMPACT

- Enhance partnerships
- Improve efficiency, quality and standardization
- Encourage strategic investment
- Catalyze and coordinate action
- Monitor results
- Promote accountability

with the result of improving health for all of western North Carolina - Led by WNC Health Network, Inc.



Community Health Improvement Process

**2019 -
2020**
(and all the time)

Act on what's
important and
Evaluate

Compile
Health-related
Data – Needs
and Assets

2018

**Engaged
Partners &
Community**

Analysis and
Interpretation

Collaborative
Action Planning

2019

Prioritization of
Needs

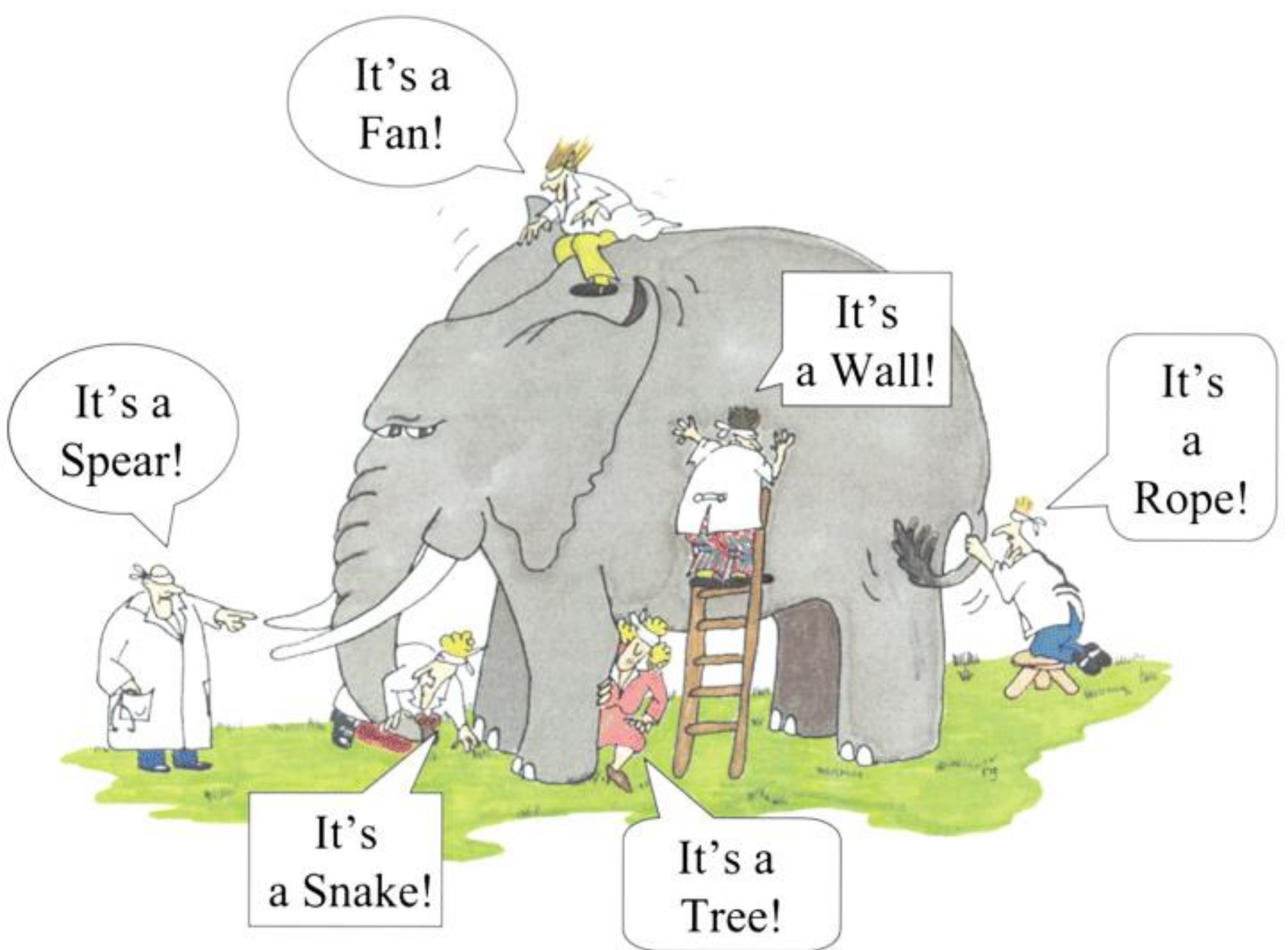
CH(N)A

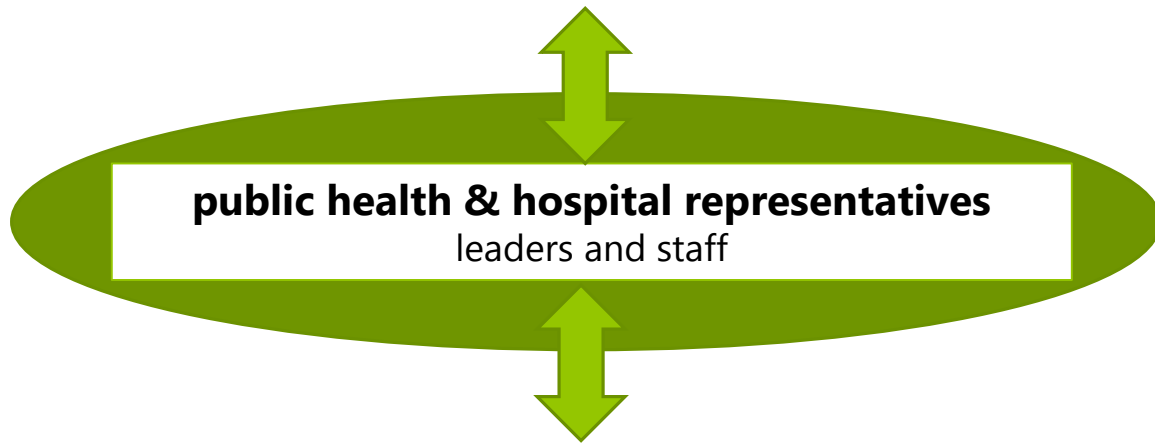
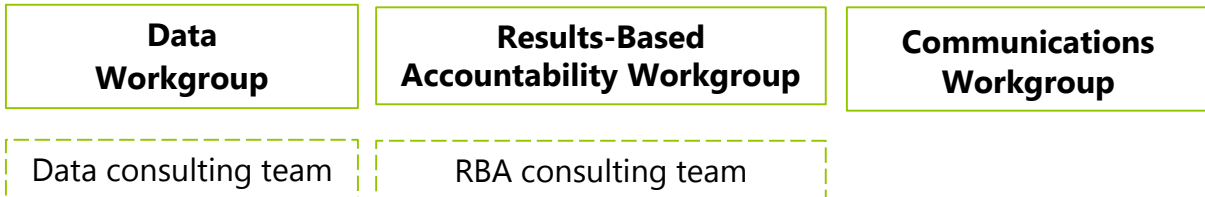


WHAT'S A "COMMUNITY HEALTH (NEEDS) ASSESSMENT?"

- Community health assessment is a **systematic** examination of the **health status indicators** for a given **population** that is used to identify key problems and assets in a community.
- The ultimate goal of a community health assessment is to develop strategies to address the community's health needs and identified issues.
- A variety of tools and processes may be used to conduct a community health assessment; the essential ingredients are **community engagement** and **collaborative participation**.







Local partners and stakeholders

Community Health (Needs) Assessment

Regional

- Infrastructure & support
- Core data sets and analysis
- Health resource inventory (partnership with 211)
- Local data products
- Reporting templates
- Communication tools
- Training, coaching, technical assistance
- *Happening now for 2018*

Local

- Local partner coordination
- Data interpretation
- Additional local data collection as needed
- Community engagement
- Priority setting
- Final reporting *due 2019*



Community Health (Needs) Assessment

Regional



Local

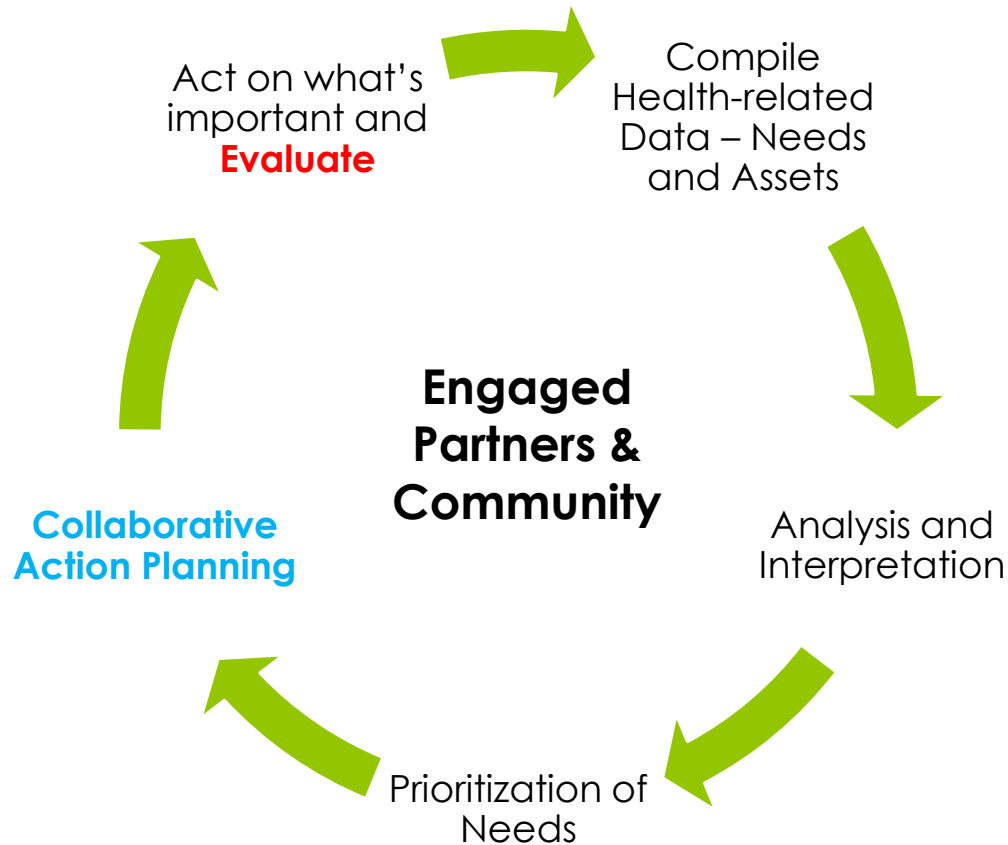


Dataset Strategy (Ingredients)

- A comprehensive set of county-level data that reflects health status and factors/determinants.
 - **Secondary data – (data that exists)**
 - Pulled from publicly available sources and compiled into a workbook with all WNC counties and a regional comparison provided.
 - **Primary data – (data that we create)**
 1. Regional Community Health Survey
 - Statistically representative sample of the broader community
 2. “Key Informant” Interview Surveys
 - Expert opinion and “story behind the data”
- Can be supplemented locally (listening sessions, etc.)

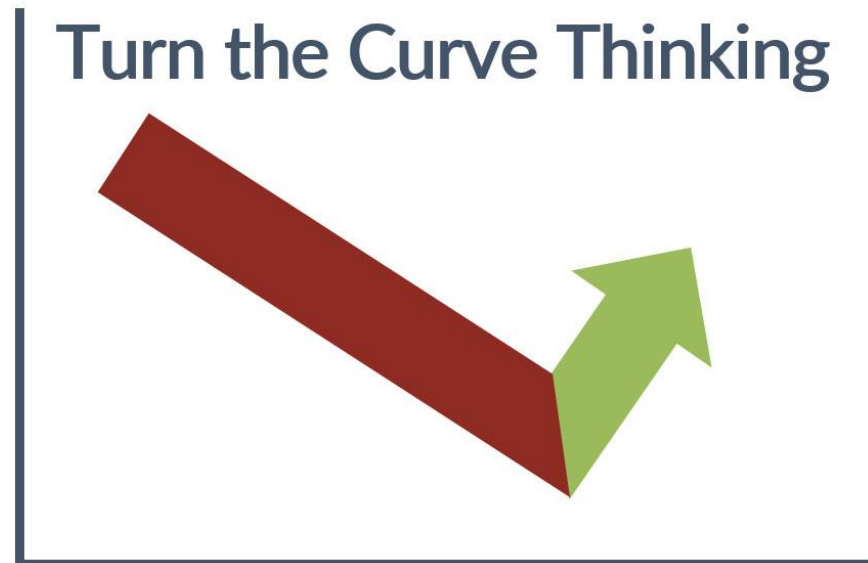


Community Health Improvement Process



RESULTS-BASED ACCOUNTABILITY™ (RBA)

- Uses a data-driven, decision-making process to help communities and organizations get from **“talk” to action.**
- It is a simple, common sense framework that everyone can understand. RBA starts with end in mind.
- **Operationalizes and measures collective impact.**



WHY IS WNC HEALTHY IMPACT USING RBA?

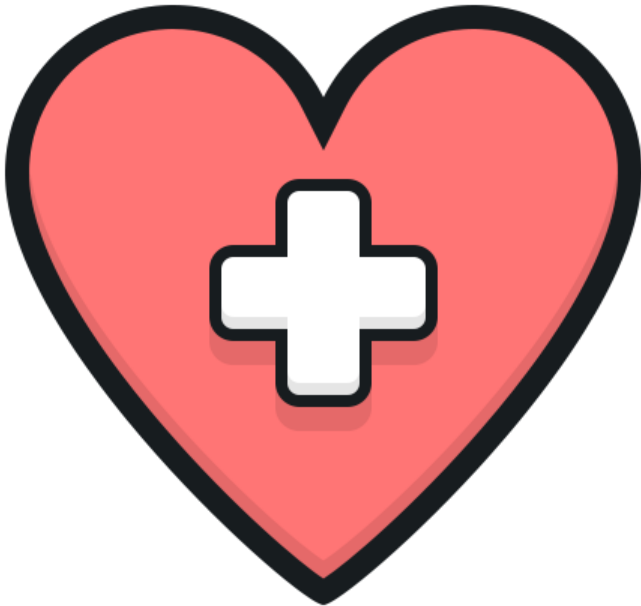
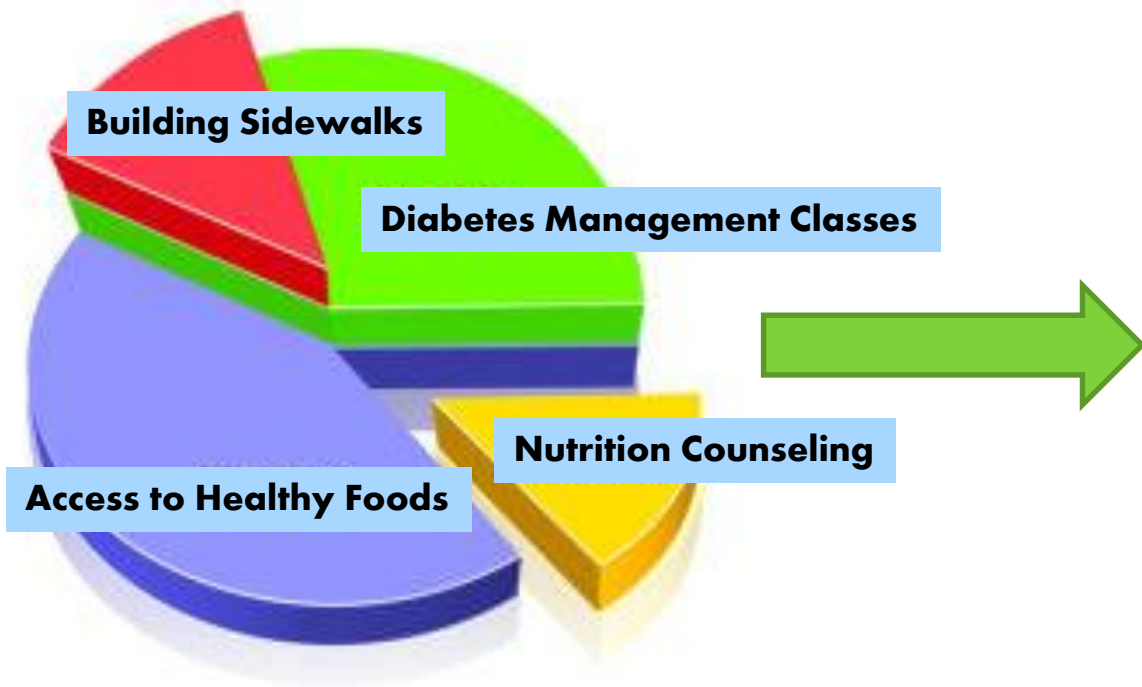
- National focus on cost, quality, population health and **measurable results** within health and healthcare
- Being results-focused and data-driven is best practice, good business, and often a compliance requirement.
- We need common language and capacity to clearly show and measure **how strategies contribute to the “big priorities”** at the population level.
- *94% of public health leads in WNC Healthy Impact agreed RBA provides an “improvement over the usual way of working.”*
 - *“...provides such a strong foundation to improve local results while aligning collectively across the region.”*





INVESTMENT PORTFOLIO





**Program/Strategy
Performance Measures**

**Population Indicator
(e.g. Diabetes Incidence)**

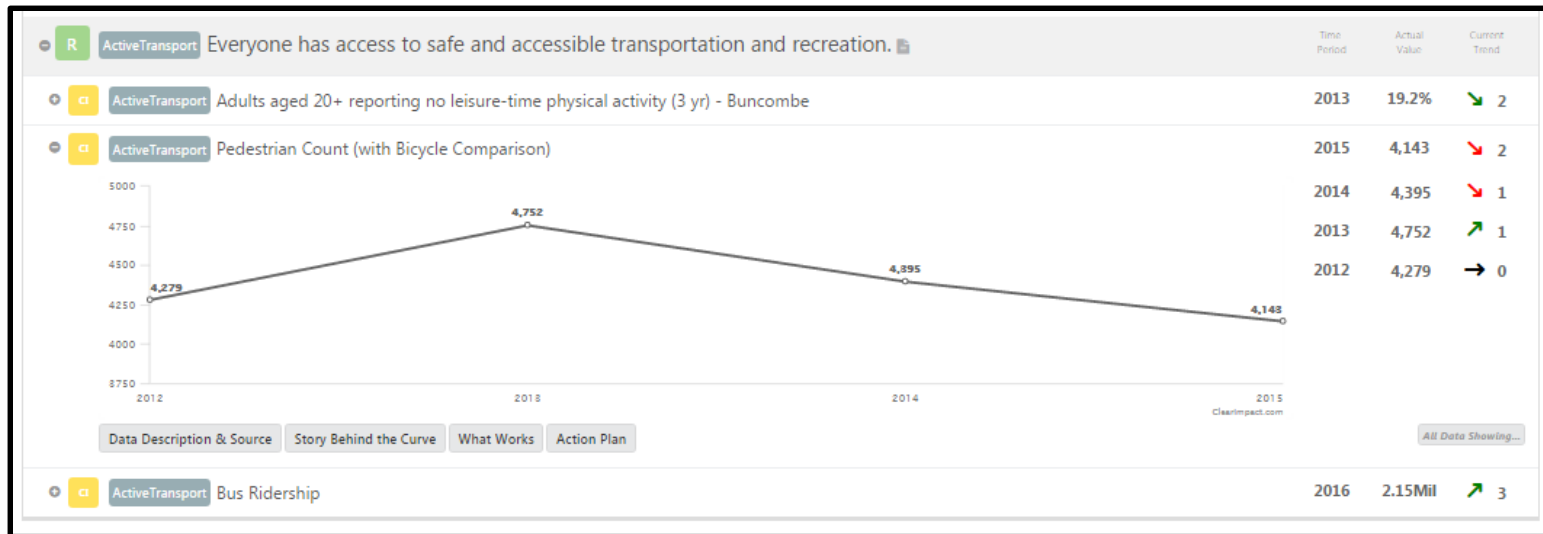
COMMUNICATION AND ACCOUNTABILITY

- We provide licenses, templates, training, and ongoing support for the use of Clear Impact Scorecards for community health improvement.
- This is a real-time, [interactive scorecard](#) to display population and program-level data.



ELECTRONIC COMMUNITY HEALTH IMPROVEMENT PLANS

- Easy-to-use, low cost, data tracking and display tool
- We build templates with guidance
- Helps organize community health improvement efforts
- Real-time and interactive, easy to connect to & share with partners



100% of public health reps in WNC Healthy Impact agree it's "an improvement over the usual way of working"



2018 Results for Health Conference

Using Results-Based Accountability to Strengthen Health Improvement

May 16-18 2018

Crowne Plaza Resort | Asheville, North Carolina