

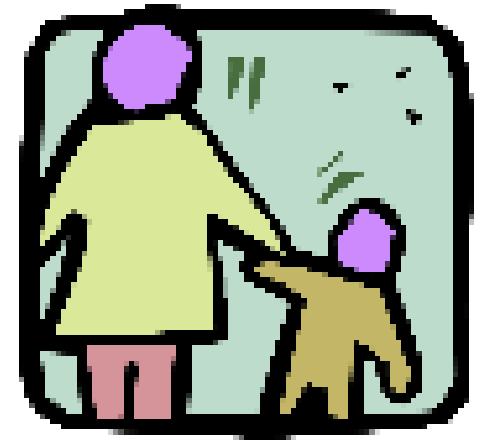


Pediatric Quality Metrics

Measure Sets

&

Considerations for Use



Marian Earls, MD, MTS, FAAP
January 18, 2017
NC IOM

Measure Sets

- CCNC QMAF (Quality Measures and Feedback)
 - EPSDT Profile
 - Well-visit rates (by 15 months of age; 3-6 yrs of age; 7-10 yrs of age; 11-21 yrs of age)
 - Well-visit components (maternal depression screening at 1,2,4,6 month visits; developmental and behavioral screening for 0-5; school-age screening, adolescent risks & strengths screening, adolescent depression screening; BMI, vision, hearing)
 - Asthma (Medication Management and Asthma Med Ratio)
 - Oral Health (annual dental visit; varnishing)
- Child CQM's (Core Set)

2017 Additions to the Child Core Set

MEASURES RECOMMENDED BY MAP FOR PHASED ADDITION TO THE CHILD CORE SET

Rank	Measure Name and NQF Number, if applicable
1	NQF #2797: Transcranial Doppler Ultrasonography Screening Among Children with Sickle Cell Anemia Level of Care NQF #0480: PC-05 Exclusive Breast Milk Feeding (Conditional Support*) NQF #2830: PC-05 Exclusive Breast Milk Feeding (e-measure) (Conditional Support*)
2	NQF #2801: Use of First-Line Psychosocial Care for Children and Adolescents on Antipsychotics
3	NQF #2902: Contraceptive Care – Postpartum (Conditional Support*)

*MAP has conditionally supported measures that are pending endorsement by NQF, undergoing a change by the measure steward, or have not received CMS confirmation of feasibility.

Measure Considerations

- Major Measure Resources
 - NQF (National Quality Forum)
 - CMS Core Quality Measures (CQM's)
 - Meaningful use
 - Claims and EHR sources
- Experience of Care (communication, access, medical “homeness”)
 - CAHPS (Consumer Assessment of Healthcare Providers and Systems)
 - Family Medical Home Index

Measure Considerations

- Annual reporting vs quality improvement
- Process and outcome measures
- Claims vs chart (EHR) measures
 - Challenges of mining EHR's
 - NC CHIPRA Quality Grant experience with Pediatric EHR Format
 - Lack of pediatric content in EHR's

Existing MH/BH Measures

- National Behavioral Health Quality Framework (NBHQF)
 - 510 measures – 53 endorsed by NQF
 - 68 for <18 yr olds - 17 endorsed by NQF
 - Most claims –based, process, screening, depression
- Pediatric-pertinent measures

MEASURE DESCRIPTION	STEWARD	NQF	CMS Child Core Set	CMS BH Core Set	Meaningful Use	
Screening for Clinical Depression and Follow-up Plan**	CMS	0418			X	
Child and Adolescent Major Depressive Disorder: Suicide Risk Assessment*	AMA-PCPI	1365	X	X	X	
Initiation & Engagement of Alcohol and other Dependence Treatment**	NCQA	0004			X	13 and older
Depression Remission at 12 months*	MN Community Measurement	0710		X	X	18 and older
Follow-up Care for Children Prescribed ADHD Medication	NCQA	0108	X	X	X	
Use of Multiple Concurrent Antipsychotics in Children and Adolescents	AHRQ-CMS CHIPRA NCINQ		X	X		
Developmental Screening in the First Three Years of Life	OHSU	1448	X			
Maternal Depression Screening	NCQA	1401			X	
Follow-up after Hospitalization for Mental Illness	NCQA	0576	X	X		
Closing of the Referral Loop**					X CMS50v4	
<i>Pediatric Symptom Checklist</i>	Mass General Hosp	0722				under review, proposed
	* = emeasure		** = requires chart/EHR data			

Measures for the Future?

- Measures of Integration (practice assessment scales)
 - AHRQ, The Academy: Integrating Behavioral Health and Primary Care – several tools
 - AIMS (Advancing Integrated Mental Health Solutions), University of Washington
 - MeHAF (Maine Health Access Foundation)
 - Integrated Services & Patient and Family-Centeredness
 - Practice/Organization
- Outcome (well-being) Measures
- Functional Measures (child or adolescent; family)
- What else is needed for the pediatric population?